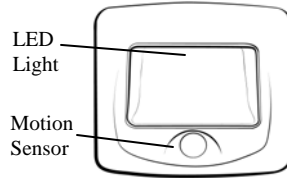




# Wireless LED Motion Light INSTRUCTION GUIDE

2700 Port Road  
Columbus, Ohio 43217  
www.dorcy.com  
www.dorcydirect.com  
1-800-837-8558



Thank you for purchasing the Dorcy Wireless LED Stair-Lite. We are committed to eliminating darkness by using the latest in light-emitting diodes (LED's). LED's are the most efficient and durable light sources available. We are certain that your Wireless LED Stair-Lite will contribute to a safer environment and provide light where you need it at a very reasonable cost.

### ENCLOSED YOU WILL FIND:

- Wireless LED Stair-Lite
- Double-Sided Tape
- 2 Screws and 2 Anchors

### STAIR-LITE FEATURES

**Low-Glow** – Your Wireless LED Stair-Lite glows automatically when in darkness to show you its location.

**Motion Sensor Activated** – Once motion is detected, your Wireless LED Stair-Lite lights up brightly. Light shuts off automatically if no motion is detected after the set time and returns to Glow Mode.

**Light Sensor** – Wireless LED Stair-Lite goes on only in darkness to conserve battery life.

**Weatherproof** – Wireless LED Stair-Lite can be mounted outside or inside.

### WARNING

- Please use only new alkaline or lithium C-Cell batteries with 1.5V rating. Do not mix old and new batteries. Install batteries with polarity in correct position.
- Please follow battery instructions for proper disposal and cautions.
- Please mount fixture securely with included screws, and use anchors if not securing to solid wood or other solid material.
- Your Stair-Lite is equipped with a light sensor, which is covered with a plastic plug. **Do not cover the sensor plastic plug.**

## INSTALLATION INSTRUCTIONS

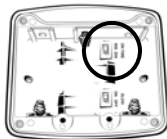
### BEFORE YOU MOUNT YOUR STAIR-LITE

Illustration 1



1. Remove rear cover of Stair-Lite by removing 2 screws on back (Illustration 1).

Illustration 2



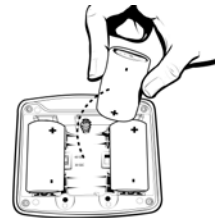
2. Set auto shut-off to 20 or 60 seconds as shown in **Illustration 2**. **Setting to 20 seconds will extend battery life.**

Illustration 3



3. Set "GLOW" to 'On' if you want it to glow all night or 'Off' for no glow. Setting to Off will extend battery life.

Illustration 4



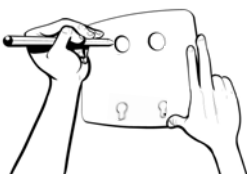
4. Insert 3 C-Cell Batteries into Stair-Lite as shown in **Illustration 4**. Replace cover. Test by taking it into a dark room.

NOTE: Please use only new alkaline or lithium C-Cell batteries with 1.5V rating. Do not mix old and new batteries. Install batteries with polarity in correct position as shown. Stair-Lite may take up to 30 seconds to activate the first time after batteries are changed. Room must be very dark.

### MOUNTING YOUR STAIR-LITE

- **If Mounting Inside, We Recommend Using Double-Sided Tape (Applied as shown in Illustration 8)**
- **If Mounting Outside, Please Follow These Instructions:**

Illustration 5



1. Determine location for mounting Stair-Lite. Flip rear cover upside down and **use holes for thumb screws as template** to mark two holes for anchors and/or screws (included) as shown in **Illustration 5**. We recommend mounting the screws parallel to the ground if mounting on a vertical surface. Make sure that screws are precise distance from each other as defined by the distance of the thumbscrew holes. Replace rear cover and insert screws.

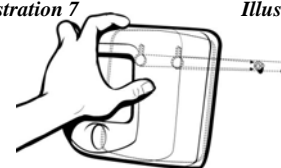
Illustration 6



Screw heads should protrude 1/8" from surface

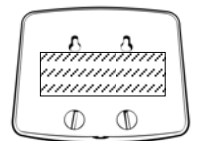
2. If using anchors, use 3/16" drill bit to drill holes and insert anchors. Drive screws into anchors so that screw head protrudes 1/8" from the surface (the height of the screw head—**Illustration 6**). If using screws only, use 1/8" drill bit to drill holes and insert screws so that screw head protrudes 1/8" from the surface (the height of the screw head).

Illustration 7



3. Slide Stair-Lite down so screws are securely held by track (**Illustration 7**).

Illustration 8—Indoor Use Only



**Please Note: If GLOW is set on "ON" your Stair-Lite will emit a very low glow once it detects darkness. This low light will continue throughout the darkness. When the Stair-Lite detects motion it will emit a bright light and will continue on bright until no motion is detected. At that point it will go back into "GLOW" mode.**

### ONE YEAR WARRANTY

The product you have purchased is guaranteed against defects in workmanship and materials for one year from the date of purchase. If the product fails due to a manufacturing defect during normal use, return the product and dated sales receipt to Dorcy International, 2700 Port Road, Columbus, Ohio.

**Not Covered – Batteries are not covered by this warranty.** Repair service, adjustment and calibration due to misuse, abuse or negligence are not covered by this warranty. Unauthorized service or modification to this product or of any furnished components will void this warranty in its entirety. This warranty does not include reimbursement for inconvenience, installation, set-up time, loss of use, postage, unauthorized service, or other products used in conjunction with, but are not supplied by, Dorcy.